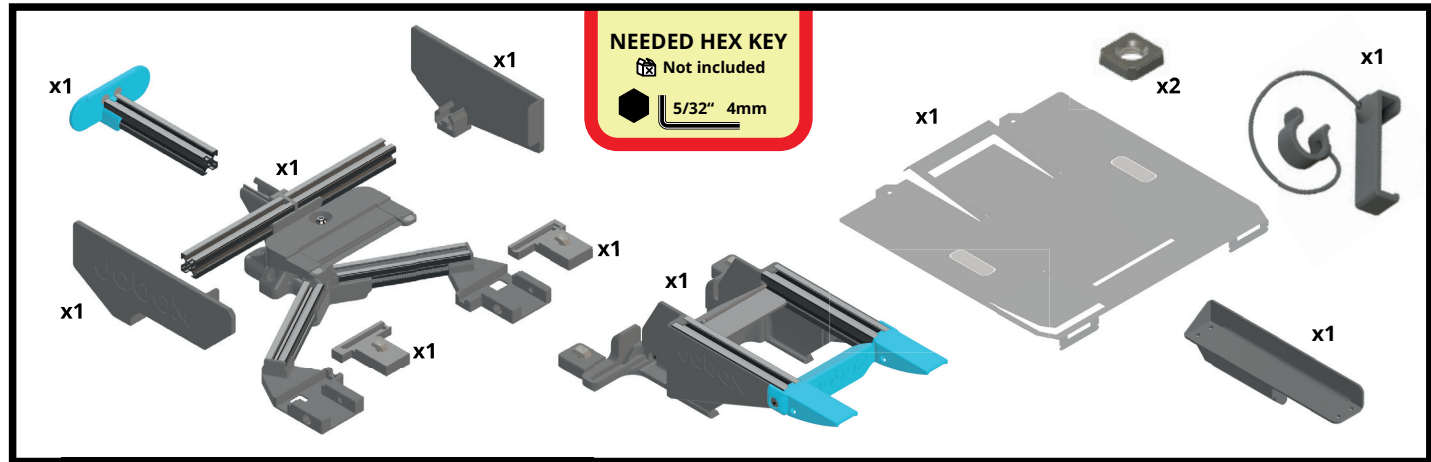




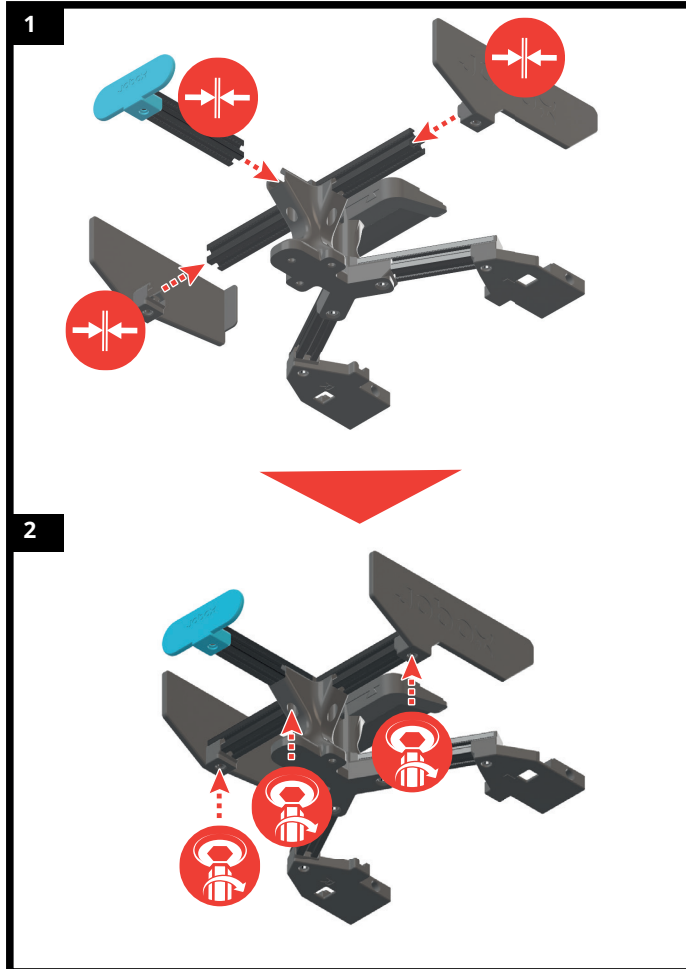
START-UP GUIDE

JobOx 1.5 for Prusa MK3S+/MK4

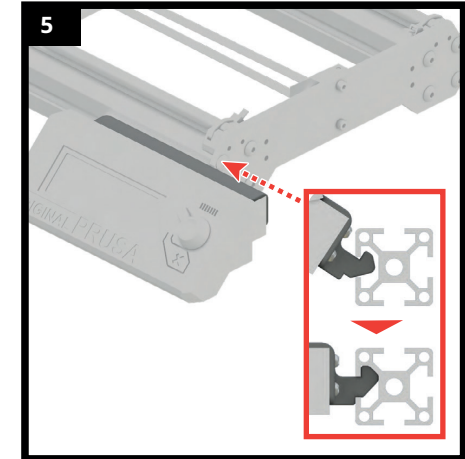
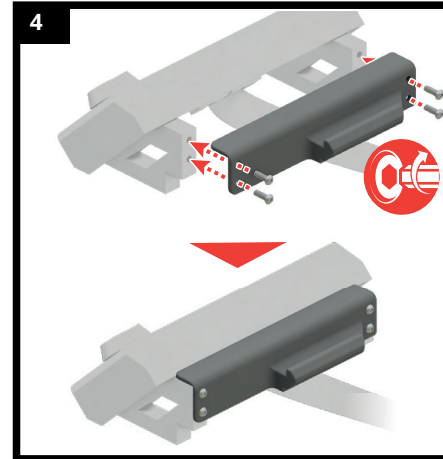
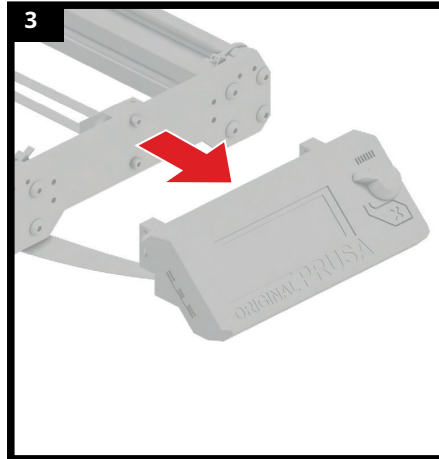
PARTS OVERVIEW



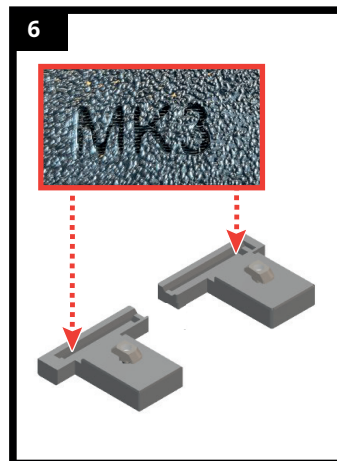
ASSEMBLY THE MAGAZINE



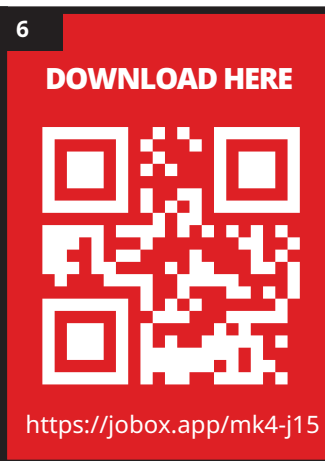
MOVE THE DISPLAY



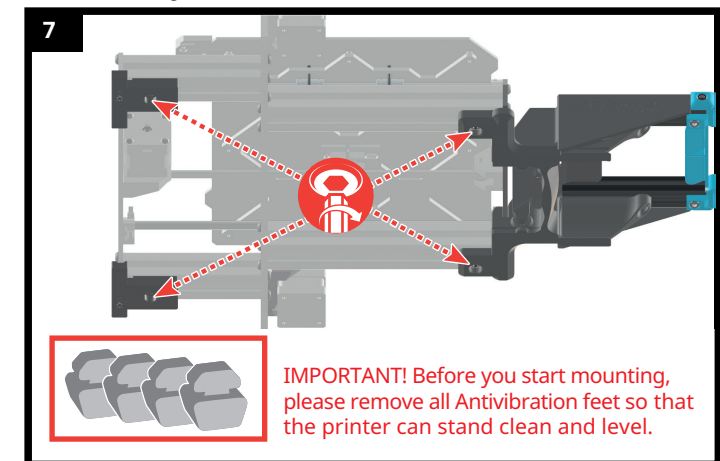
MK3S+ ENCLOSED



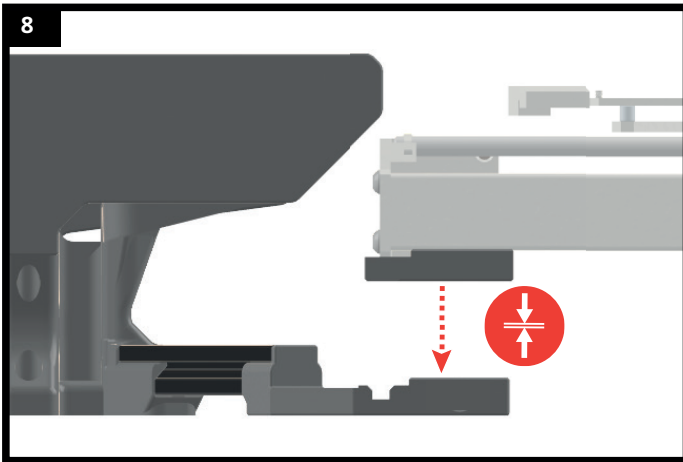
MK4 FOR DOWNLOAD



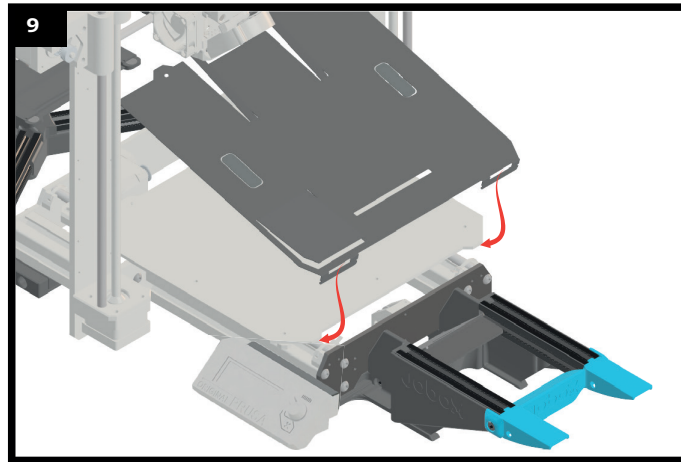
DOCKING EJECTING UNIT AND MAGAZINE ADAPTER



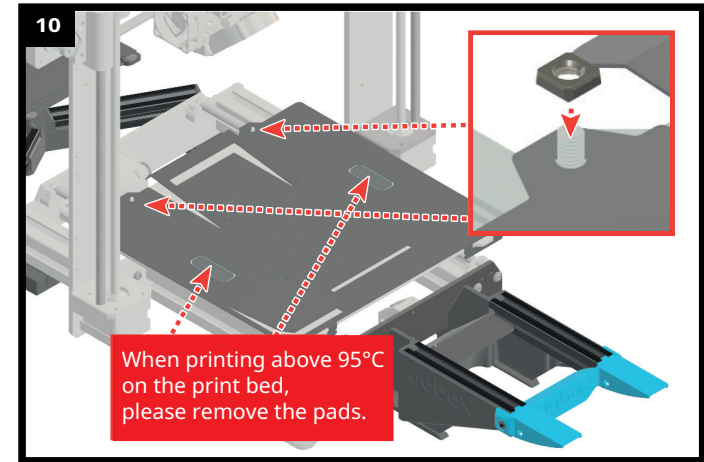
CONNECTING TO THE MAGAZINE



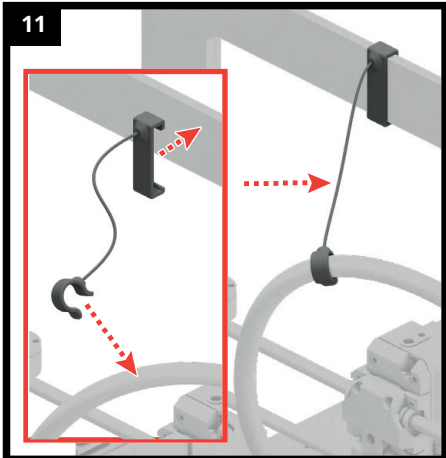
SET UP HEAT BED COVER



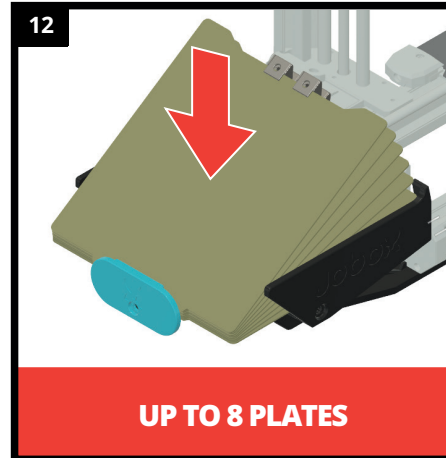
FIXING THE HEAT BED COVER



SECURE EXTRUDER CABLE



LOADING BUILD PLATES

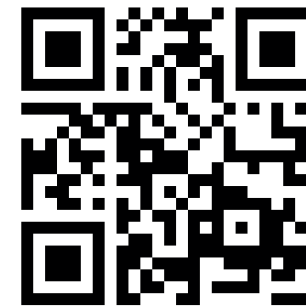


TEST YOUR SETUP



ONLINE MANUAL

View this guidance as a PDF



https://jobox.app/ifu/jobox1-5_v01.pdf

EXPLANATION



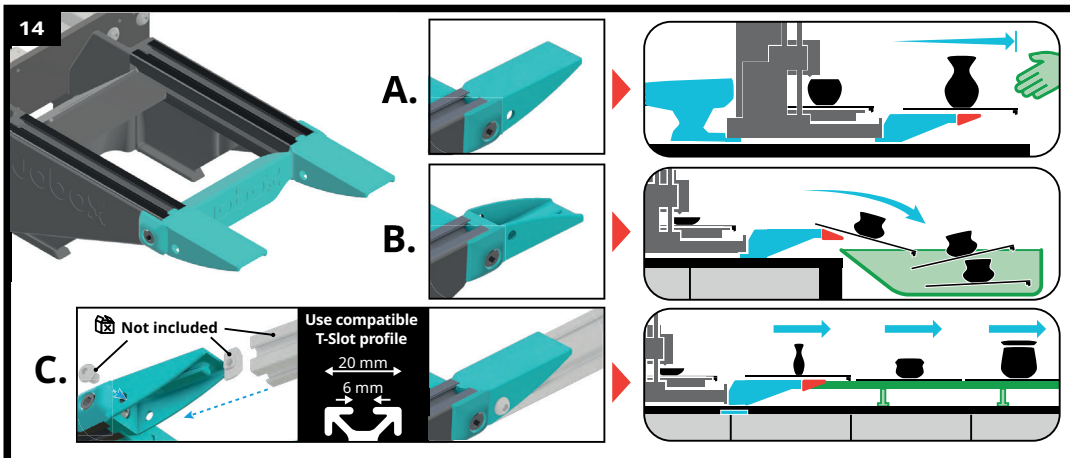
Push in until it stops, take care of alignment



Tighten the screws using hex key

Manufacturer: URBANMAKER
Made in GERMANY

OPTIONS FOR EJECTING THE BUILD PLATES



The ejecting unit of the JobOx can be used in multiple modes, depending on which way around the end pieces are turned and assembled.

- A. If the flat surface is turned upwards, the last unloaded Build Plate will remain on the ramp. This mode is best suitable for big long-term prints and operating with few Build Plates. Make sure that you will have the opportunity to take down the plate before your next print is finished and the unloading process begins.
- B. If the flat surface is turned downwards, all unloaded Build Plates will slide down from the ramp. This mode is best suitable for high put through frequency. Make sure to prepare the collecting container or enough space on the surface behind the ramp. Your objects should also be sturdy enough not to be

accidentally damaged by subsequent sliding/falling building plates.

- C. The end pieces can also serve as a connector to extend the unloading ramp. This setup is the most space consuming but also the safest option and recommended for large scale production facilities. Use two stock 2020 T-Slot (6mm) aluminum profiles (not included) of desired length. These profiles can be fixed using a T-Slot nuts and a screws (not included) if necessary.